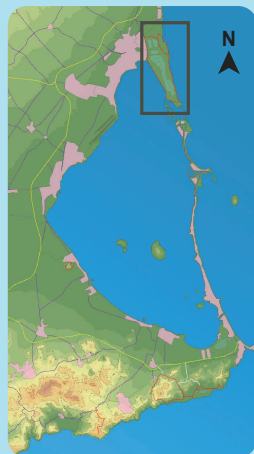


MORE INFORMATION

Las Salinas Visitor Centre
Avenida de Las Salinas s/n
San Pedro del Pinatar
Telephone numbers:
968 178 139 / 649 227 395
infosanpedro@cam.es
www.murcianatural.cam.es



Instagram Twitter Facebook @SalinasSPedroPR





Molino de la Calcetera

Regional Park of the Salinas de San Pedro

Regional Park of the Salinas y Arenales de San Pedro del Pinatar Regional Park is a wetland of international importance as a nesting and resting place for numerous species of birds. It is located between the municipalities of San Pedro del Pinatar and San Javier and covers an area of 856 hectares, including 6 km of Mediterranean coastline. The diversity of flora and fauna species, together with the traditional activities in harmony with the environment, such as fishing in Las Encañizadas and salt exploitation, make this protected natural area an example of sustainable development.

Public Services



	Car Park	Picnic Area	Toilets	Viewpoint	Path	Information	Recharging Point	Accessible Path
Las Salinas Visitor Centre	✓	✓	✓	✓	✓	✓	✓	✓
Curva de la Culebra	✓	✗	✗	✗	✓	✗	✗	✗
Coterillo Pond	✓	✓	✓	✓	✓	✗	✗	✗
Port	✓	✗	✓	✗	✓	✗	✗	✗
Paseo de los Molinos	✓	✗	✓	✓	✓	✓*	✗	✓

(*)More information at the tourist office of San Pedro del Pinatar 968 18 23 01

DURING YOUR VISIT...

- Leave your vehicle in the authorized parking spaces. Camping and overnight camping is forbidden.
- Respect the native fauna and flora, collection is not allowed.
- Take responsibility for the waste you generate, take it home or use the containers. Please remember that cigarette butts and any food waste are also considered rubbish.
- Always walk on authorized paths. Creating shortcuts deteriorates the soil. Always walk on the walkways and never on the dunes.
- In the Mud Baths please remove the mud in the same pond in which you applied it, not in the Mar Menor.
- Remember that it is forbidden to make fire.
- Keep pets on a lead and please clean up if necessary. Municipal laws do not allow the presence of pets on beaches. Find out beforehand about the existence of dog beaches.
- Avoid making noise as it could bother the wildlife and other visitors.
- In case of emergency, call 112.

ENJOY THE PARK



APPROVED TRAILS INSIDE THE REGIONAL PARK	Start	End	Length	Time	Circular	Comments
Las Encañizadas Trail 	Park entrance (next to roundabout)	Park entrance (next to roundabout)	11,9 km	3 h	Yes	A section of the path concur with the Blue Trail "Caminando entre Molinos Salineros".
El Coterillo Trail 	Coterillo Car Parking	Coterillo Car Parking	3,8 km	60 min	Yes	
Los Tarays Trail 	Park entrance (next to roundabout)	El Mojón	1,3 km	20 min	No	Section of the Blue Path and the GR-92. Recommended for bicycles.
Long Distance Foot-Trail 	El Mojón Beach	Molino de Quintín	3 km	45 min	No	Section of the path recommended for bicycles.

Las Encañizadas Trail PR-MU 65

Discover the different landscapes of the Regional Park: reed beds, salt ponds, salt pans, pine forests, dunes, beaches and the one that gives its name to this trail, Las Encañizadas, a natural connection between the Mar Menor and the Mediterranean and an example of traditional sustainable fishing. In addition, at the end of your walk you will walk between two old windmills, where you will find the popular mud baths to which therapeutic properties are attributed.



El Coterillo Trail SL-MU 9

Go around Coterillo Pond and discover the great diversity of fauna and flora in this natural area. Let yourself be surprised by the curious shapes of the pine forest, the intense colours of the salt marshes, the fragile dunes and, on the beach, by the rests of the marine plant *Posidonia oceanica*.



Los Tarays Trail GR-92

Walk among the "magic" trees as you follow the course of the water. You will be able to observe some of its colourful winged inhabitants through the vegetation growing along the water's edge.

